

BLACKTOWN DUPLEX

ELECTRICAL SERVICES AND AS-BUILT DRAWINGS

PRODUCED: **SEPTEMBER 2025**

REVISION: **A**

PRODUCED BY: **Specialist Services**

6 Ferris St North Paramatta NSW



HEAD CONTRACTOR: **PRIME BUILD PTY LTD**

6 Hassall St, Parramatta NSW 2150

CONTENTS

- 1. GENERAL DESCRIPTION**
- 2. SUPPLIER DETAILS**
- 3. COMPLIANCE & CERTIFICATES**
- 4. DATA SHEETS**
- 5. AS-BUILT DRAWINGS**

Specialist Services Australia Pty Ltd | ABN 89 135 692 170 | ACN 135 692 170
Telephone: 1300 322 000 | Email: admin@specialistsvs.com.au

NSW Office
6 Ferris Street, North Parramatta NSW 2151
License: 220319C / Refrigerant License: AU37048

VIC Office
3/88 Wirraway Drive, Port Melbourne VIC 3207
License: REC 26786

QLD Office
15 Christine Avenue, Miami QLD 4220
License: 82540

1: GENERAL DESCRIPTION

The extent of works includes, but not limited to the following, all in accordance with the Drawings, Specifications, project brief and Subcontract documents:

The work includes the following:

- Temporary supply during construction work
- Internal Lighting
- Lighting Fittings & Lighting Controls
- Communication Cabling
- Power socket outlets, outlets, permanent connections, etc
- Testing & Commissioning
- Operation & Maintenance Manuals & 'As-Installed' Drawings

2: SUPPLIER DETAILS

DESCRIPTION

General Electrical Materials

SUPPLIER

John R Turks

6/2 Windsor Rd

Northmead NSW 2152

Web: www.jrt.com.au

Light Fittings

SUPPLIER

John R Turks

6/2 Windsor Rd

Northmead NSW 2152

Web: www.jrt.com.au

3: COMPLIANCE & CERTIFICATES

SECTION

A - Site Details

B - Extract from AS. NZS2293.2:1998

C - Luminaire Details

D- Compliance Certificates

Specialist Services Australia Pty Ltd | ABN 89 135 692 170 | ACN 135 692 170
Telephone: 1300 322 000 | Email: admin@specialistsvs.com.au

NSW Office
6 Ferris Street, North Parramatta NSW 2151
License: 220319C / Refrigerant License: AU37048

VIC Office
3/88 Wirraway Drive, Port Melbourne VIC 3207
License: REC 26786

QLD Office
15 Christine Avenue, Miami QLD 4220
License: 82540

SECTION A

A: SITE DETAILS

Site: Blacktown Duplex

Address: 74 & 74A Stephen St Blacktown 2148

Maintenance Contractor: Specialist Services AUST Pty Ltd

Address: 6 Ferris Street
North Parramatta NSW 2151

Contact: Specialist Services

Phone: 1300 322 000

Final Commissioning Date: September 2025

Specialist Services Australia Pty Ltd | ABN 89 135 692 170 | ACN 135 692 170
Telephone: 1300 322 000 | Email: admin@specialistsvs.com.au

NSW Office
6 Ferris Street, North Parramatta NSW 2151
License: 220319C / Refrigerant License: AU37048

VIC Office
3/88 Wirraway Drive, Port Melbourne VIC 3207
License: REC 26786

QLD Office
15 Christine Avenue, Miami QLD 4220
License: 82540

SECTION B

B: EXTRACT FROM AS. NZS2293.2:1998

SECTION 3: INSPECTION AND MAINTENANCE PROCEDURES FOR SINGLE-POINT SYSTEMS

3.1 REQUIRED PROCEDURES The procedures described in Clauses 3.2 and 3.3 shall be carried out at intervals of not greater than those specified. Groups of self-contained emergency luminaires and exit signs may be tested on a rotational basis, provided that the maintenance intervals for the individual luminaires or exit signs do not exceed those specified.

Any emergency luminaire or exit sign which fails to operate satisfactorily shall be either repaired or replaced. Where battery replacement is necessary, the requirements of Clause 3.4 shall apply.

NOTE: With reference to the discharge test of clause 3.2, it should be noted that for part of the test period the building may be without emergency lighting. This risk is considered acceptable, except where the regulatory authority deems otherwise. When selecting a time for the discharge test, consideration should be given to the nature of the occupancy of the building in order to minimize the risk, e.g. conducting the test discharge at a time that will permit recharging of the battery when the building is unoccupied.

3.2 SIX-MONTHLY PROCEDURES

3.2.1 General The procedures specified in Clauses 3.2.2 and 3.2.3 shall be carried out at intervals of not more than six months

NOTES:

- 1 A check should be made to ensure that no interruption to the normal supply has taken place for a period of at least 16 h prior to conducting a discharge test.
- 2 For emergency luminaires and exit signs with tubular fluorescent lamps, it is recommended that the lamps be replaced if they exhibit excessive end-blackening, even when the lamps still operate.

3.2.2 Discharge test

3.2.2.1 Where manual discharge test facilities are provided. Where manual discharge test facilities are provided, the following procedures shall be carried out:

- (a) Operate the emergency luminaires and exit signs from their battery supply by simulating failure of the monitored supply. The luminaires and exit signs shall remain illuminated for not less than the required in-service duration.

NOTE: Provision may be made for continuance of the discharge test beyond the required duration, e.g. until operation is terminated by the automatic battery cut-off device.

- (b) Restore the emergency luminaires and exit signs to normal condition and check that the battery charger operation indicator functions correctly.

3.2.2.2 Automatic discharge test facilities. Where the emergency luminaires or exit signs are provided with facilities for automatic discharge testing, a visual check shall be made of the operational status of each unit either by means of the indicator at each unit, where self-contained facilities are provided, or by means of the relevant controller or indicator panel where centralized testing facilities are provided.

Those units which failed the previous discharge test shall be either repaired and restored to normal condition or replaced.

NOTE: A discharge test may also be carried out at any time using the manual initiation facility where provided in accordance with section 4 of AS/NZS 2293.1.

3.2.3 Additional check for indirect lighting systems for indirect lighting systems, carry out the following:

- (a) Check that the finish of the major reflecting surfaces (e.g. walls, ceilings) have reflectance's of not less than those on which the design of the system was based.
- (b) Check that emergency luminaires of the directional beam type, if used, are aimed in such a manner that the beam will not be directed into the eyes of persons moving through the designated area.

3.3 TWELVE-MONTHLY PROCEDURES The following procedure shall be carried out at intervals of not more than 12 months:

- (a) Carry out all the checks listed in Clause 3.2.
 - (b) Clean all light-emitting and reflecting surfaces of emergency luminaires and exit signs.
- NOTE: This procedure may be carried out in conjunction with the discharge test of Clause 3.2.2.

3.4 BATTERY REPLACEMENT: Replacement of batteries in the emergency luminaires and exit signs shall be carried out in accordance with the following requirements:

- (a) Where more than one cell is utilized, the complete battery pack shall be replaced
- (b) Replacement batteries shall be of the same type and ampere-hour capacity.

Whenever batteries are replaced for any reason, a discharge test shall be conducted in accordance with Clause 3.2.2 except that the test shall be continued for 1.33 times the required in-service duration.

SECTION C

Specialist Services Australia Pty Ltd | ABN 89 135 692 170 | ACN 135 692 170
Telephone: 1300 322 000 | Email: admin@specialistsvs.com.au

NSW Office
6 Ferris Street, North Parramatta NSW 2151
License: 220319C / Refrigerant License: AU37048

VIC Office
3/88 Wirraway Drive, Port Melbourne VIC 3207
License: REC 26786

QLD Office
15 Christine Avenue, Miami QLD 4220
License: 82540

SECTION D

D: Certificates

- Electrical Installation Certificate
- Mechanical Ventilation
- Smoke Detector



Certificate of Compliance

In accordance with AS/NZS 3000-2018 Electrical Installations, Wiring Rules

This document certifies that the Electrical Installation meets or exceeds the requirements:

Electrical Installation, Commissioning and Maintenance installed at

Blacktown Duplex 74 & 74A

74 & 74a Stephen St Blacktown NSW 2148

Supplied by

Specialist Services NSW

ABN 89 135 692 170 / ACN 135 692 170

LICENCE 220319C

6 Ferris Street, North Parramatta NSW 2151

Smoke Alarms Installation Certificate

PrimeBuild ■

Builder

Project Details

Job Reference:	C25019	Part of Building to be certified:	Smoke Alarms – Entire Building
Address:	74 Stephen Street, BLACKTOWN		
CDC:	CDC/5663482	Lot/DP:	Lot 393 DP 31926

I hereby certify that:


- The works have been inspected during construction and have been completed in accordance with the nominated Standards of Performance.

Measure and/or system	Standards of Performance
Smoke Alarms Installation Certificate	Certified by a licensed electrician, after installation, as complying with AS3786 - 2014 "Smoke Alarms" in accordance with Housing Provisions 9.5.4 of the Building Code of Australia - Smoke Alarms.

- I am a properly qualified person and have a good working knowledge of the relevant codes and standards referenced above. (My qualifications and accreditations are listed below):

Contractor License No. 220319C

- The information contained in this statement is true and accurate to the best of my knowledge.

Full Name:	Shannon Hall		
ABN:	89 135 692 170		
Company:	Specialist Services Pty Ltd		
Phone:	0405 123 683		
Address:	6 Ferris Street North Parramatta NSW 2151		
Signature:		Date:	04/09/2025

Mechanical Ventilation System - INSTALLATION CERTIFICATE

DA / CC	
Project Name	<i>Blacktown Duplex</i>
Address	Lot 394, 74 Stephen Street, BLACKTOWN 2148
Part of Building to be certified	<i>Mechanical Air Conditioning System.</i> <i>- Ducted AC system.</i> <i>Mechanical Ventilation</i> <i>- Mechanical Ventilation for Ensuite</i> <i>- Upstairs bathroom</i> <i>- Downstairs WC.</i>

I hereby certify that:

- a) The works have been inspected during construction and have been completed in accordance with the nominated Standards of Performance.

Measure and/or system	Standards of Performance
Air Conditioning and Mechanical Ventilation Systems	<ul style="list-style-type: none">• NCC 2022 H4P5• AS1668.2-2012 – Mechanical Ventilation in Buildings.

- b) I am a properly qualified person and have a good working knowledge of the relevant codes and standards referenced above. (My qualifications and accreditations are listed below)

Relevant qualifications and accreditations: _____

AIR CONDITIONING COMPANY LICENCE 220319C

- c) The information contained in this statement is true and accurate to the best of my knowledge.

Name: MICHAEL KEARNS _____

Company: SPECIALIST SERVICES AUSTRALIA _____

Address: 6 FERRIS STREET NORTH PARRAMATTA _____

Phone No. 02 9630 1244 _____ Fax No. 02 9630 1255 _____

Michael Kearns

03.09.25

Signature

Date

4: DATA SHEETS

Specialist Services Australia Pty Ltd | ABN 89 135 692 170 | ACN 135 692 170
Telephone: 1300 322 000 | Email: admin@specialistsvs.com.au

NSW Office
6 Ferris Street, North Parramatta NSW 2151
License: 220319C / Refrigerant License: AU37048

VIC Office
3/88 Wirraway Drive, Port Melbourne VIC 3207
License: REC 26786

QLD Office
15 Christine Avenue, Miami QLD 4220
License: 82540



MCB 1P 6kA C-63A 1M

MSN163

Technical Properties

Number of modules	1
Number of poles	1 P
Rated short circuit breaking capacity I _{cn} AC according IEC60898-1	6 kA
Curve	C
Rated operational voltage U _e	230/400 V
Rated current	63 A
Frequency	50/60 Hz
Rated insulation voltage	500 V
Operating temperature	-25 to 60 °C
Electric endurance in number of cycles	4000
Number of mechanical operations	20000
Top and bottom screw terminals connection capacity with rigid cable	1/25 mm ²
Top and bottom screw terminals connection capacity with flexible cable	1/16 mm ²
Tightening torque	2,8Nm
Height of installed product	83 mm
Width of installed product	17,5 mm
Depth of installed product	70 mm
Standard text	EN 60898-1 ; AS/NZ 60898-1



ADC920T

RCBO 1M 1P+N 6kA C-20A 30mA A

Architecture

Neutral position	right
Number of protected poles	1
Number of poles	2 P
Type of pole	1P+N
Fixing mode	DIN rail type O (symmetrical)
Curve	C

Compatibility

Compatible with DIN rail mounting	yes
-----------------------------------	-----

Connectivity

Bottom connection alignment for modular devices	Aligned terminal
Top connection alignment for modular devices	Shifted terminal

Main electrical features

Frequency	50 Hz
Rated short circuit breaking capacity I_{cn} AC according IEC60898-1	
Type of supply voltage	AC
Rated operational voltage U_e	230/240 V

Voltage

Rated insulation voltage	440 V
Max operating voltage	264 V
Rated impulse withstand voltage	4 kV

Electric current

Rated residual operating current	30 mA
Withstand not tripping on 8-20 μ s wave	0,25 kA
Rated short circuit breaking capacity I_{cn} under 230V AC according IEC 61009-1	6 kA
Rated short circuit breaking capacity I_{cn} under 240V AC according IEC 61009-1	6 kA
Rated service breaking capacity I_{cs} under 230V AC according IEC 61009-1	6 kA

Technical Properties

Rated service breaking capacity Ics under 240V AC according IEC 61009-1	6 kA
Breaking and opening capacity	4,5 kA
Magnetic regulating current	5/10 In
min/maxi threshold value of the AC thermal operation	1,13/1,45 In

Electric current / temperature

Rating current -15°C	24,5 A
Rating current -20°C	25 A
Rating current 0°C	23 A
Rating current 10°C	22 A
Rating current -10°C	24 A
Rating current 15°C	21,5 A
Rating current 20°C	21 A
Rating current 25°C	20,5 A
Rating current -25°C	25,5 A
Rating current 30°C	20 A
Rating current 35°C	19,6 A
Rating current 40°C	19,2 A
Rating current 45°C	18,8 A
Rating current 5°C	22,5 A
Rating current -5°C	23,5 A
Rating current 50°C	18,4 A
Rating current 55°C	18 A
Rating current 60°C	17,6 A
Rating current 65°C	17,2 A
Rating current 70°C	16,8 A

Power

Power loss per pole at In	7,58 W
Total power loss under IN	11,68 W

Dimensions

Depth of installed product	70 mm
Height of installed product	85 mm
Width of installed product	17,7 mm

Installation, mounting

Type of top connection for modular devices	with screw
Type of bottom rail clip for modular devices	plastic
Type of Bottom Connection for modular devices	Blconnect
Bottom removability for modular devices	yes
Top removability for modular devices	no
Suitable for flush-mounting	yes

Connection

Upstream cage clamp delivery status	opened
Downstream cage clamp delivery status	opened
Connection cross-section at output with screw, for flexible conductor	1/10 mm²
Connection cross-section of the access with screws, with flexible conductor	1/10 mm²
Connection cross-section at output with screw, for massive conductor	1/16 mm²
Connection cross-section for rigid conductor, upstream terminals with screws	1/16 mm²

Technical Properties

Nominal tightening torque bottom terminal	2,1 Nm
Nominal tightening torque top terminal	1,9 Nm
Connection cross section of access and exit with screws, for flexible conductor	1/10 mm ²
Connection cross-section of input and output with screws, for massive conductors	1/16 mm ²

Cable

Length of conductors used for the heating test (m) according to product standard	1 m
Conductor cross-section used for heating test(mm ²) according to product standard	2,5 mm ²

Equipment

Can be accessorized	no
Quick connect	no
Type selective	no

Standards

Standard text	IEC 61009-1, AS/NZS 61009-1
European directive WEEE	concerned

Safety

Protection index IP	IP20
Residual current type	A

Use conditions

Degree of pollution according to IEC 60664 / IEC 60947-2	2
Class of energy limitation I ² t	3
Altitude	2000 m
Storage/transport temperature	-25 80 °C

temperatur

Temp.-rise limits for access. parts (not touched) according to product standard	60 K
Temperature of calibration	30 °C
Ambient air temperature during heating test according to the product standard	23,4 °C
Max. admissible temperature on accessible parts (intended to be touched)	64,9 °C
Max. admissible temperature on accessible parts (manual operating means)	48,9 °C
Max. admissible temperature on access. parts (not touched for normal operation)	94,1 °C
Max. admissible temperature on terminals	82,2 °C
Temperature-rise measured on accessible parts at In (intended to be touched)	24,9 K
Temperature-rise measured on accessible parts at In (manual operating means)	8,9 K
Temperature-rise measured on access. parts at In (not touched normal operation)	54,1 K
Temperature-rise measured on terminals at In	42,2 K
Temp.-rise limits for access. parts (toggle) according to product standard	40 K

Technical Properties

Temp.rise limits for access. parts (to be touched) according to product standard	40 K
Temperature-rise limits for terminals according to the product standard	65 K



Insulated busbar 1P fork 16mm² 12M

KDN180A

Technical Properties	
Number of modules	12
Number of poles	1 P
Rated current	80 A
Connection cross-sect. rigid cable	16mm ²
Connector type	busbar fork
Isolated busbar	yes
Length	210 mm

The GoodWe logo is displayed in a bold, red, sans-serif font. In the background, a woman with brown hair tied back is sitting on a couch, smiling and looking at a laptop. A potted plant is visible on the left side of the frame.

DNS G3 Series

3-6kW | Single Phase
2 MPPTs

The GoodWe DNS G3 series inverter is designed for single-phase residential applications. Integrated with high-current input and DC input oversizing capabilities, the DNS G3 provides optimised power generation and substantial return on investment. With its lighter and fanless compact design, the DNS G3 inverter provides a reliable power supply that runs at a super quiet operation of less than 25dB. The inverter also takes safety measures including optional Arc Fault Current Interrupter (AFCI) and Type II Surge Protection Device (SPD) on both sides to protect the system from electrical fire and lightning hazards in extreme environments, for guaranteed safety.



Smart Control & Monitoring

- 24/7 load consumption monitoring*
- Multiple communication protocols supported



Optimal Generation

- Max. 16A input current per string
- 150% DC input oversizing & 110% AC output overloading



Superb Safety & Reliability

- Optional AFCI preventing electrical fires*
- Optional AC & DC Type II SPD & SPD failure alarm*



Friendly & Thoughtful Design

- IP66 ingress protection
- Low noise level thanks to fanless cooling

Technical Data	GW3000-DNS-30	GW3600-DNS-30	GW4200-DNS-30	GW5000-DNS-30	GW6000-DNS-30
Input					
Max. Input Power (W)	4500	5400	6300	7500	9000
Max. Input Voltage (V)	600	600	600	600	600
MPPT Operating Voltage Range (V)	40 ~ 560	40 ~ 560	40 ~ 560	40 ~ 560	40 ~ 560
Start-up Voltage (V)	50	50	50	50	50
Nominal Input Voltage (V)	360	360	360	360	360
Max. Input Current per MPPT (A)	16	16	16	16	16
Max. Short Circuit Current per MPPT (A)	23	23	23	23	23
Number of MPP Trackers	2	2	2	2	2
Number of Strings per MPPT	1	1	1	1	1
PV Input Operating Voltage Range	40 ~ 600	40 ~ 600	40 ~ 600	40 ~ 600	40 ~ 600
Output					
Nominal Output Power (W)	3000	3600	4200 ^{*1}	5000	6,000
Nominal Output Apparent Power (VA)	3000	3600	4200 ^{*1}	5000	6,000
Max. AC Active Power (W) ^{*2}	3300	3960	4620 ^{*1*3}	5500	6,600
Max. AC Apparent Power (VA) ^{*2}	3300	3960	4620 ^{*1*3}	5500	6,600
Nominal Output Voltage (V)	220 / 230 / 240	220 / 230 / 240	220 / 230 / 240	220 / 230 / 240	220 / 230 / 240
Nominal AC Grid Frequency (Hz)	50 / 60	50 / 60	50 / 60	50 / 60	50/60
Max / Rated Output Current (A)	14.4	17.3 ^{*3}	20.1 ^{*3}	24.0	28.8
Power Factor	~1 (Adjustable from 0.8 leading to 0.8 lagging)				
Max. Total Harmonic Distortion	<3%	<3%	<3%	<3%	<3%
Efficiency					
Max. Efficiency	97.9%	97.9%	97.9%	97.9%	97.9%
European Efficiency	97.0%	97.0%	97.2%	97.3%	97.4%
Protection					
PV String Current Monitoring	Integrated	Integrated	Integrated	Integrated	Integrated
PV Insulation Resistance Detection	Integrated	Integrated	Integrated	Integrated	Integrated
Residual Current Monitoring	Integrated	Integrated	Integrated	Integrated	Integrated
PV Reverse Polarity Protection	Integrated	Integrated	Integrated	Integrated	Integrated
Anti-islanding Protection	Integrated	Integrated	Integrated	Integrated	Integrated
AC Overcurrent Protection	Integrated	Integrated	Integrated	Integrated	Integrated
AC Short Circuit Protection	Integrated	Integrated	Integrated	Integrated	Integrated
AC Overvoltage Protection	Integrated	Integrated	Integrated	Integrated	Integrated
DC Switch	Integrated	Integrated	Integrated	Integrated	Integrated
DC Surge Protection	Type III (Type II Optional)				
AC Surge Protection	Type III (Type II Optional)				
AFCI	Optional	Optional	Optional	Optional	Optional
General Data					
Operating Temperature Range (°C)	-25 ~ +60	-25 ~ +60	-25 ~ +60	-25 ~ +60	-25 ~ +60
Relative Humidity	0 ~ 100%	0 ~ 100%	0 ~ 100%	0 ~ 100%	0 ~ 100%
Max. Operating Altitude (m)	3000	3000	3000	3000	3000
Cooling Method	Natural Convection				
User Interface	LED, LCD (Optional), WLAN + APP				
Communication	WiFi, RS485 or LAN or 4G or DI (Ripple Control or DRM) (Optional)				
Communication Protocols	Modbus-RTU (SunSpec Compliant)				
Weight (kg)	12.8	12.8	12.8	12.8	13.4
Dimension (W x H x D mm)	350 x 410 x 143	350 x 410 x 143	350 x 410 x 143	350 x 410 x 143	350 x 410 x 143
Noise Emission (dB)	<25	<25	<25	<25	<25
Topology	Non-isolated	Non-isolated	Non-isolated	Non-isolated	Non-isolated
Self-consumption at Night (W)	<1	<1	<1	<1	<1
Ingress Protection Rating	IP66	IP66	IP66	IP66	IP66
DC Connector	MC4 (4 ~ 6mm ²)	MC4 (4 ~ 6mm ²)	MC4 (4 ~ 6mm ²)	MC4 (4 ~ 6mm ²)	MC4 (4 ~ 6mm ²)
AC Connector	Plug and play connector (Max.6mm ²)				
Country of Manufacture	China	China	China	China	China

*1: For Malaysia GW4200-DNS-30 Nominal Output Power (W) and Nominal Output Apparent Power (VA) and Max. AC Active Power (W) and Max. AC Apparent Power (VA) is 4000.

*2: For Belgium Max. AC Active Power (W) and Max. AC Apparent Power (VA) GW3000-DNS-30 is 3000, GW3600-DNS-30 is 3600, GW4200-DNS-30 is 4200, GW5000-DNS-30 is 5000, GW6000-DNS-30 is 6000; Nominal Output Current (A) GW3000-DNS-30 is 13.0, GW3600-DNS-30 is 15.7, GW4200-DNS-30 is 18.3, GW5000-DNS-30 is 21.7, GW6000-DNS-30 is 26.1.

*3: For Netherlands Max. AC Active Power (W) and Max. AC Apparent Power (VA) GW3600-DNS-30 is 3600, GW4200-DNS-30 is 4200; Max. Output Current (A) and Nominal Output Current (A) GW3600-DNS-30 is 15.7, GW4200-DNS-30 is 18.3.

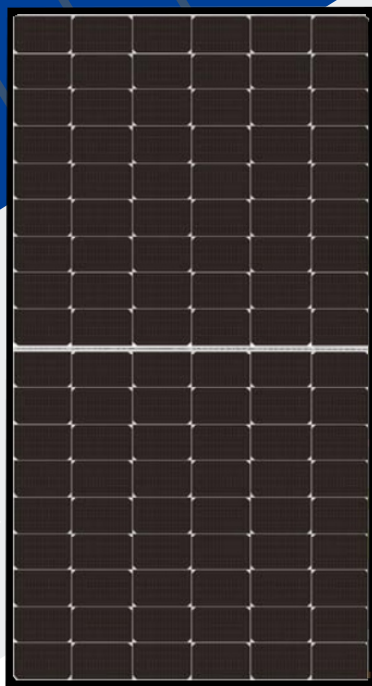
*: All pictures shown are for reference only. Actual appearance may vary.

*: Optional functions or devices are purchased separately.

*: Please visit GoodWe website for the latest certificates.

n-type TOPCon

HIGH PERFORMANCE MODULE



RSM108-9-415N-440N

108 CELL

n-type Module

415-440Wp

Power Output Range

1500VDC

Maximum System Voltage

22.5%

Maximum Efficiency

KEY SALIENT FEATURES



Global Tier1 PV module manufacturer

n-type solar cell without LID caused by B-O, power degradation in 1st year is no more than 1%

Better Temperature Coefficient



Industry leading 25 years product warranty ★



Excellent low irradiance performance



Excellent PID resistance



Positive power tolerance of 0~+3%



Double EL testing ensuring defect-free products



Module Imp binning radically reduces string mismatch loss



Excellent wind load 2400Pa & snow load 5400Pa under certain installation method



Comprehensive product and system certification

- ◆ IEC61215:2016; IEC61730-1/-2:2016;
- ◆ ISO 9001:2015 Quality Management System
- ◆ ISO 14001:2015 Environmental Management System
- ◆ ISO 45001:2018 Occupational Health and Safety Management System

Subject to the terms and conditions contained in the applicable Risen Energy Limited Warranty Statement. This 25-year product warranty is only applicable for products installed on residential rooftops in Australia.



★ As there are different certification requirements in different markets, please contact your local Risen Energy sales representative for the specific certificates applicable to the products in the region in which the products are to be used.

RISEN ENERGY CO., LTD.

Risen Energy is a leading, global tier 1 manufacturer of high-performance solar photovoltaic products and provider of total business solutions for residential, commercial and utility-scale power generation. The company, founded in 1986, and publicly listed in 2010, compels value generation for its chosen global customers. Techno-commercial innovation, underpinned by consummate quality and support, encircle Risen Energy's total Solar PV business solutions which are among the most powerful and cost-effective in the industry. With local market presence and strong financial bankability status, we are committed, and able, to building strategic, mutually beneficial collaborations with our partners, as together we capitalise on the rising value of green energy.

Tashan Industry Zone, Meilin, Ninghai 315609, Ningbo | PRC

Tel: +86-574-59953239 Fax: +86-574-59953599

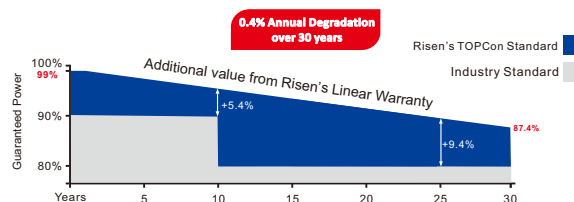
E-mail: marketing@risenenergy.com Website: www.risenenergy.com



Preliminary
For Global Market

LINEAR PERFORMANCE WARRANTY

25 year Product Warranty / 30 year Linear Power Warranty

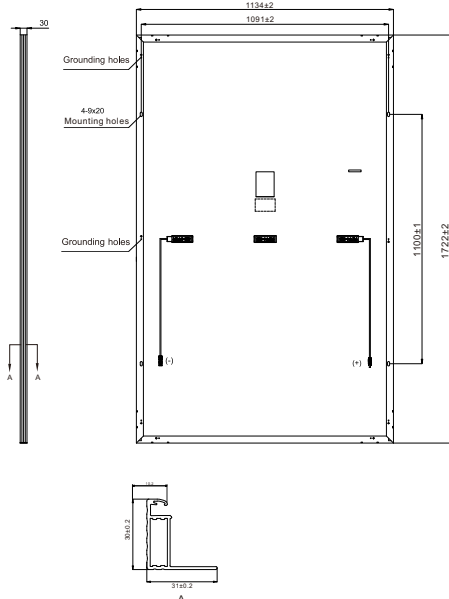


Only applicable to Residential rooftop in Australia

THE POWER OF RISING VALUE

Dimensions of PV Module

Unit: mm



ELECTRICAL DATA (STC)

Model Number	RSM108-9-415N	RSM108-9-420N	RSM108-9-425N	RSM108-9-430N	RSM108-9-435N	RSM108-9-440N
Rated Power in Watts-Pmax(Wp)	415	420	425	430	435	440
Open Circuit Voltage-Voc(V)	38.67	38.87	39.07	39.27	39.47	39.67
Short Circuit Current-Isc(A)	13.70	13.78	13.86	13.94	14.00	14.06
Maximum Power Voltage-Vmpp(V)	32.37	32.56	32.75	32.95	33.15	33.34
Maximum Power Current-Impp(A)	12.84	12.92	13.00	13.07	13.13	13.18
Module Efficiency (%) ★	21.3	21.5	21.8	22.0	22.3	22.5

STC: Irradiance 1000 W/m², Cell Temperature 25°C, Air Mass AM1.5 according to EN 60904-3.

★ Module Efficiency (%): Rounding to the nearest number

ELECTRICAL DATA (NMOT)

Model Number	RSM108-9-415N	RSM108-9-420N	RSM108-9-425N	RSM108-9-430N	RSM108-9-435N	RSM108-9-440N
Maximum Power-Pmax (Wp)	314.8	318.6	322.5	326.1	329.5	332.8
Open Circuit Voltage-Voc (V)	35.78	36.15	36.34	36.52	36.71	36.89
Short Circuit Current-Isc (A)	11.16	11.30	11.37	11.43	11.48	11.53
Maximum Power Voltage-Vmpp (V)	29.86	30.22	30.40	30.57	30.76	30.94
Maximum Power Current-Impp (A)	10.48	10.54	10.61	10.67	10.71	10.76

NMOT: Irradiance at 800 W/m², Ambient Temperature 20°C, Wind Speed 1 m/s.

MECHANICAL DATA

Solar cells	n-type
Cell configuration	108 cells (6×9+6×9)
Module dimensions	1722×1134×30mm
Weight	22kg
Superstrate	High Transmission, Low Iron, Tempered ARC Glass
Substrate	White Back-sheet
Frame	Anodized Aluminium Alloy, Black
J-Box	Potted, IP68, 1500VDC, 3 Schottky bypass diodes
Cables	4.0mm ² , Positive(+)1200mm, Negative(-)1200mm (Connector Included) or customized length
Connector	MC4 EVO2, IP68

TEMPERATURE & MAXIMUM RATINGS

Nominal Module Operating Temperature (NMOT)	44°C±2°C
Temperature Coefficient of Voc	-0.25%/°C
Temperature Coefficient of Isc	0.046%/°C
Temperature Coefficient of Pmax	-0.30%/°C
Operational Temperature	-40°C~+85°C
Maximum System Voltage	1500VDC
Max Series Fuse Rating	25A
Limiting Reverse Current	25A

PACKAGING CONFIGURATION

	40ft(HQ)	20ft
Number of modules per container	936	216
Number of modules per pallet	36	36
Number of pallets per container	26	6
Packaging box dimensions (LxWxH) in mm	1738×1140×1260	1738×1140×1260
Box gross weight[kg]	835	835

CAUTION: READ SAFETY AND INSTALLATION INSTRUCTIONS BEFORE USING THE PRODUCT.

©2022 Risen Energy. All rights reserved. Contents included in this datasheet are subject to change without notice.
No special undertaking or warranty for the suitability of special purpose or being installed in extraordinary surroundings is granted unless as otherwise specifically committed by manufacturer in contract document.

THE POWER OF RISING VALUE



Coolum

4 blade 75W AC ceiling fan

- Powerful and efficient 75W AC motor
- Easy installation with our quick connect wiring solution
- Pre-balanced for smoother, quieter operation
- Slimline design ideal for indoor and covered outdoor applications
- ABS body and canopy with 4 reinforced ABS blades
- Hangsure canopy up to 15 degrees
- Reversible for summer and winter use
- Compatible with Atom Air ceiling fan remote control ACREMOTE/KIT (sold separately)
- 3 speed wall controller



ORDERING INFORMATION

Order code	18449
Description	52 inch (1320mm) 4 blade 75W AC ceiling fan white
Item Code	COOLUM/52/WH

MECHANICAL

IP Rating	IP20
Fitting Colour	Satin White
Body Material	ABS

ELECTRICAL

Working Temp Range	-10 to 40 °C
Input Frequency	50Hz Hz
Input voltage	230Vac

In Australia the Input voltage is defined as 230Vac -6%/+10%. This effectively means that the voltage range of these products are 216Vac - 253Vac or 240V +6%

AIR MOVEMENT

Motor Wattage	75 W
Motor Type	AC
No. Speeds	3
Control	Wall control
Ceiling Rake	15 °
Ceiling Drop	300 mm
Blade Pitch	13 °
Blade Material	ABS
Fan Size	1320mm (52inch)

Fan Speed 1	75 W, 257 rpm, 16200 m³/h
Fan Speed 2	37 W, 170 rpm, 12000 m³/h
Fan Speed 3	20 W, 120 rpm, 8300 m³/h

COMPLIANCE

Standards	AS/NZS 60335.1 AS/NZS 60335.2.80 AS CISPR 14
-----------	--

WARRANTY

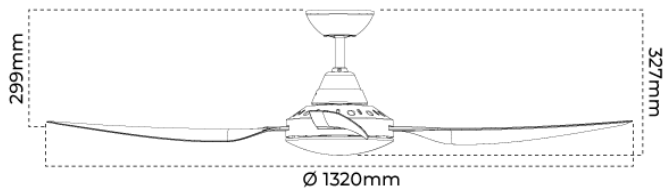
Domestic Use Warranty	4 Onsite, 2 RTB (Total 6 years)
-----------------------	---------------------------------

DIMENSIONS

Product Height	327 mm
Product Width	1320 mm
Product Weight	6360 g

LINE DRAWINGS

COOLUM/52



ACCESSORIES

Order code	12509
Description	Remote control receiver and remote kit for AC ceiling fans - White
Item Code	ACREMOTE/KIT/WH
Order code	12513
Description	1500mm Extension rod for ceiling fans w/loom - white
Item Code	ROD/150/WH
Order code	12511
Description	900mm Extension rod for ceiling fans w/loom - white
Item Code	ROD/90/WH

Eclipse

Ducted exhaust fan

- Powerful ball bearing motor for superior reliability
- Draught stopper for improved energy efficiency
- Enjoy quiet operation
- Supplied with flex and plug for easy DIY installation
- 3-year return to base warranty for peace of mind



ORDERING INFORMATION

Order code	16758
Description	290mm 35W Ducted exhaust fan with round white fascia
Item Code	ECLIPSE/290/WH/RD

MECHANICAL

IP Rating	IPx4
Fitting Colour	White
Product Finish	Matt
Installation Type	Recessed

ELECTRICAL

Working Temp Range	-10 to 40 °C
Input Frequency	50 Hz
Input voltage	230Vac

In Australia the Input voltage is defined as 230Vac -6%/+10%. This effectively means that the voltage range of these products are 216Vac - 253Vac or 240V +6%

AIR MOVEMENT

Outlet	150 mm
Noise level	45 dB
Motor Wattage	35 W
Motor Type	Ball bearing
Fan Type	Centrifugal
Fan Size	290
Air extraction	350 m3/hr

DRIVER

Flex & Plug or Lead Length	900 mm
Wiring Type	Re-wireable Flex & Plug (3 pin)

COMPLIANCE

Product Design Life	10 years
The product design life relates to the total product life which includes LEDs, drivers and the enclosure. This is different to the LED lifetime which only refers to the economical lifetime of the LEDs at which time the lumen output has dropped below the L Value. The product design life is calculated at the maximum ambient or working temperature of the product and takes into account the Daily Use.	
Daily Use	2 hrs
The Daily Use is the recommended time required to meet the product's design life. Installations can exceed this time, however the product design life will be reduced proportionally.	
Standards	AS/NZS 60335.1 AS/NZS 60335.2.80 AS/NZS CISPR 14.1

WARRANTY

Warranty Operating Hours	2500 hrs
This product is provided with a warranty up until the stated warranty period or until the stated warranty operating hours has been reached (whichever occurs first).	
Domestic Use Warranty	3 RTB (Total 3 Years)

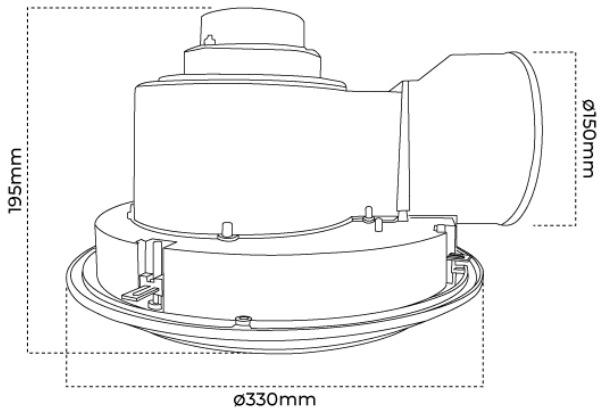


DIMENSIONS

Product Height	195 mm
Product Length	330 mm
Product Width	330 mm
Minimum Ceiling Depth	220 mm
Cutout	290 mm

LINE DRAWINGS

ECLIPSE/290/WH/RD



ACCESSORIES

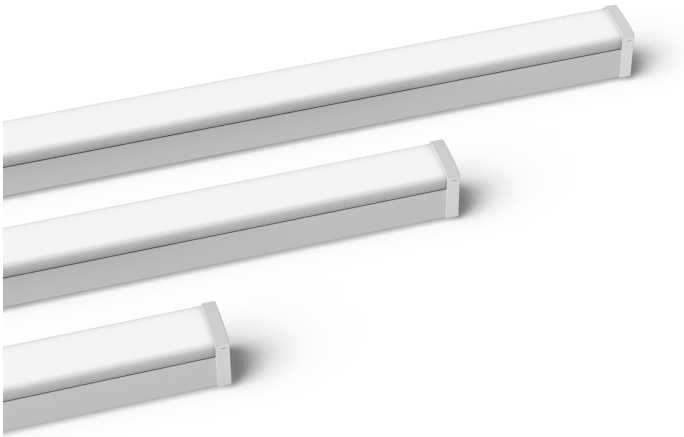
Order code	16777
Description	290mm round exhaust fan fascia - matt black
Item Code	ECLIPSE/TRIM/290/B/RD
Order code	16781
Description	290mm square exhaust fan fascia - matt black
Item Code	ECLIPSE/TRIM/290/B/SQ
Order code	16779
Description	290mm square exhaust fan fascia - matt white
Item Code	ECLIPSE/TRIM/290/WH/SQ



Spear II

LED Diffused Batten - TRI-CCT

- Narrow profile body
- Opalised reeded diffuser
- Quick close clips
- Ideal for all indoor commercial and residential applications
- Selectable colour temperature



ORDERING INFORMATION

Order code	11462
Description	Spear II - 1200mm 36W LED Diffused Batten - TRI-CCT
Driver Type	Fixed output
Item Code	AT9860/1200/TRI

MECHANICAL

Body Material	Steel
Diffuser Material	Polycarbonate
Product Finish	Powdercoated
Fitting Colour	White
IK Rating	IK08
Installation Type	Surface mount
IP Rating	IP20

ELECTRICAL

Electrical Rating	Class I
Input Frequency	50 Hz
Input voltage	230Vac
In Australia the Input voltage is defined as 230Vac -6%/+10%. This effectively means that the voltage range of these products are 216Vac - 253Vac or 240V +6%	
Maximum Wattage	36 W
Switch Type	Inline
Working Temp Range	0 to 40 °C

LAMP

Macadam Steps (SDCM)	5-step MacAdam Ellipse
CCT Configuration	TRI-CCT
Colour Rendering Index (CRI)	>80

LED LIFETIME

LED Lifetime	60000 hrs
This is the Reported LED Lifetime in Hours based on TM-21. Atom does not list the projected or calculated LED lifetime, which is normally longer as TM-21 Addendum B explicitly states "The Calculated and Projected Lp(Dk) are not to be reported". This Lifetime refers to the life of a single LED however the system life is longer since the probability and binomial distribution of all LEDs in the system means that the average led is performing above the specification and compensates for the LEDs falling below.	
LED Lifetime Rating	L70B10
TM-21 Test Hours	10000 hrs

COLOUR TEMPERATURE

36 Watts	
4000 K	3600 lm
5000 K	4100 lm
6500 K	3740 lm



DRIVER

Dimmable	No
Driver Included	Yes
Integrated Driver	No
Driver Type	Fixed output
Wiring Type	Re-wireable terminal block (3 pin)

COMPLIANCE

Product Design Life	6 years
The product design life relates to the total product life which includes LEDs, drivers and the enclosure. This is different to the LED lifetime which only refers to the economical lifetime of the LEDs at which time the lumen output has dropped below the L Value. The product design life is calculated at the maximum ambient or working temperature of the product and takes into account the Daily Use.	
Daily Use	12 hrs
The Daily Use is the recommended time required to meet the product's design life. Installations can exceed this time, however the product design life will be reduced proportionally.	

WARRANTY

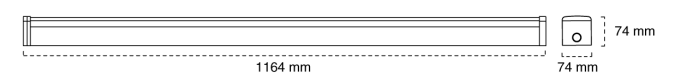
Domestic Use Warranty	3 RTB (Total 3 Years)
Warranty Operating Hours	15000 hrs
This product is provided with a warranty up until the stated warranty period or until the stated warranty operating hours has been reached (whichever occurs first).	

DIMENSIONS

Product Height	74 mm
Product Length	1164 mm
Product Width	74 mm

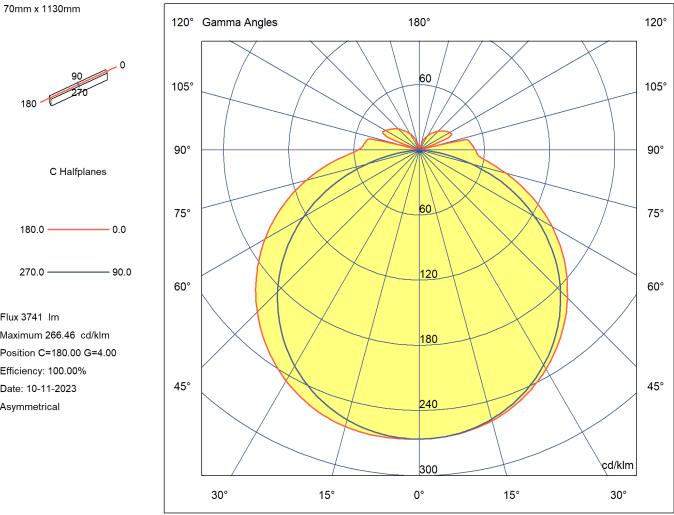
LINE DRAWINGS

AT9860/1200/TRI

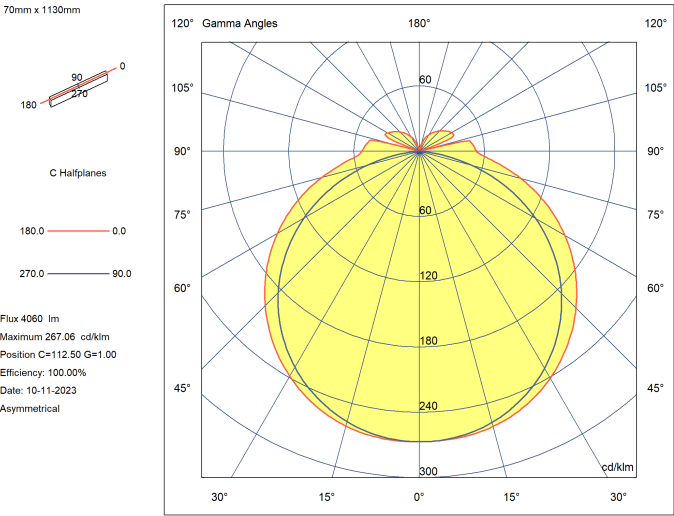


PHOTOMETRICS

AT9860/1200/TRI 6500K

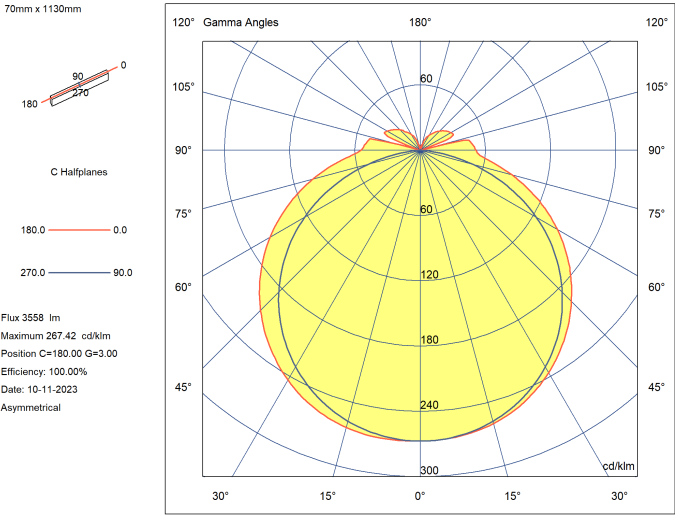


AT9860/1200/TRI 5000K





AT9860/1200/TRI 4000K





AT9039 TRI

8W LED Downlight With Dimmable Integral Driver -
Tri Colour

Features

- Built-in Driver
- Ideal for Residential, retail, showroom and decorative
- IC-4 Rated - According to AS/NZS605982.2:2016
- Seamless Look



ORDERING INFORMATION

Order code	14536
Description	8W LED Downlight Dimmable - 90deg - w/F&P - White - Recessed Lens - Tri Colour
Driver Type	Dimmable (Phase cut)
Item Code	AT9039/WH/TRI

MECHANICAL

Adjustability	Fixed
Body Material	Aluminium
Product Finish	Powdercoated
Fitting Colour	White
IC Rating	IC-4
IC-4 rating has been conducted at the products maximum working Temperature Range (C) in line with Australian standards. This provides the required safety when covered with insulation and used in Australian Environments.	
Installation Type	Recessed
IP Rating	IP44 Front Face Only

ELECTRICAL

Electrical Rating	Class II
Input Frequency	50 Hz
Input voltage	230Vac
In Australia the Input voltage is defined as 230Vac -6%/+10%. This effectively means that the voltage range of these products are 216Vac - 253Vac or 240V +6%	
Maximum Wattage	8 W
Switch Type	Inline

Working Temp Range	5 to 40 °C
--------------------	------------

LAMP

Beam Angle	90 °
CCT Configuration	TRI-CCT
CRI	>80
LED Type	Diffused
Number of Lamps	1

LED LIFETIME

LED Lifetime	36000 hrs
This is the Reported LED Lifetime in Hours based on TM-21. Atom does not list the projected or calculated LED lifetime, which is normally longer as TM-21 Addendum B explicitly states "The Calculated and Projected Lp(Dk) are not to be reported". This Lifetime refers to the life of a single LED however the system life is longer since the probability and binomial distribution of all LEDs in the system means that the average led is performing above the specification and compensates for the LEDs falling below.	
LED Lifetime Rating	L70B10 (6k)
TM-21 Test Hours	6000 hrs

COLOUR TEMPERATURE

Warm White (3000 K)	670 lm
Cool White (4000 K)	750 lm
DayLight (5700 K)	700 lm



DRIVER

Dimmable	Yes
Driver Included	Yes
Integrated Driver	Yes
Driver Type	Dimmable (Phase cut)
Wiring Type	Non rewireable Flex & Plug

COMPLIANCE

Product Design Life	10 years
The product design life relates to the total product life which includes LEDs, drivers and the enclosure. This is different to the LED lifetime which only refers to the economical lifetime of the LEDs at which time the lumen output has dropped below the L Value. The product design life is calculated at the maximum ambient or working temperature of the product and takes into account the Daily Use.	
Standards	AS/NZS 60598.1 AS/NZS 60598.2.2 AS/NZS 61347.1 AS/NZS 61347.2.13 AS CISPR 15

WARRANTY

Commercial Use Warranty	3 RTB (Total 3 Years)
Domestic Use Warranty	3 (Yr) RTB
Operational Lifetime	30000 hrs
VIP Warranty	2 Onsite, 3 RTB (Total 5 Years)

VIP warranty is available to registered users and is subjected to additional terms and conditions.

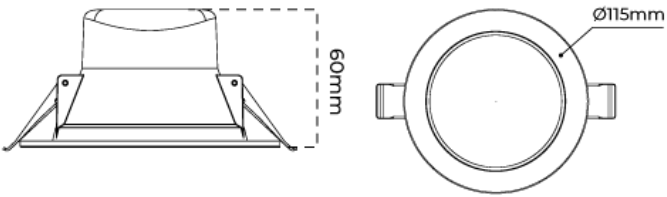
Warranty Operating Hours	13000 hrs
This product is provided with a warranty up until the stated warranty period or until the stated warranty operating hours has been reached (whichever occurs first).	

DIMENSIONS

Cutout	90 mm
Product Diameter	115 mm
Product Height	60 mm

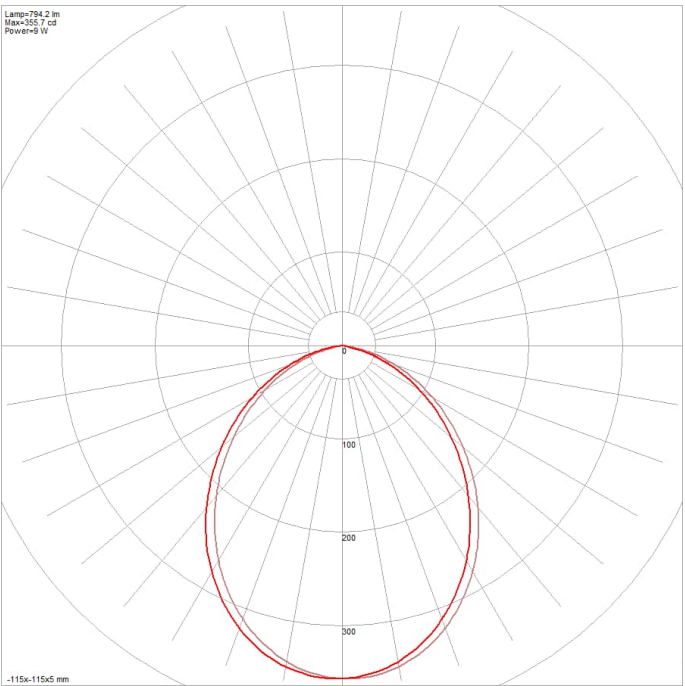
LINE DRAWINGS

AT9039/TRI

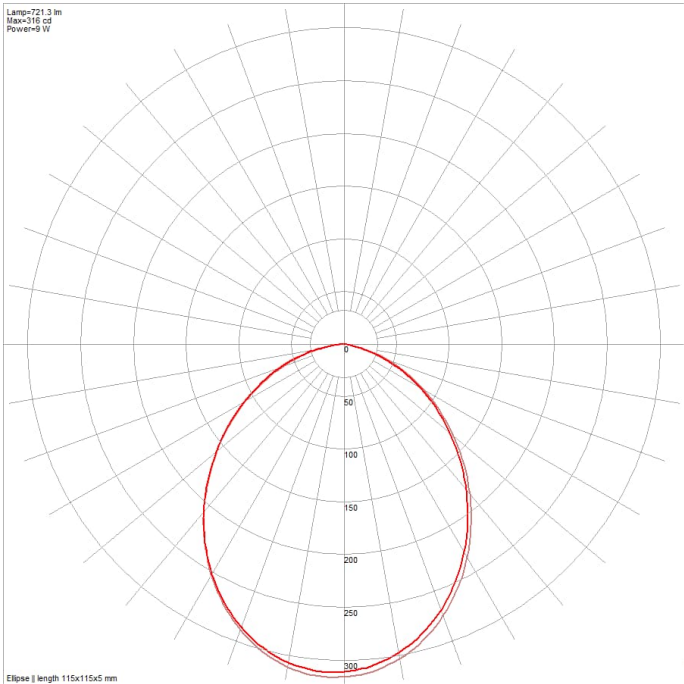


PHOTOMETRICS

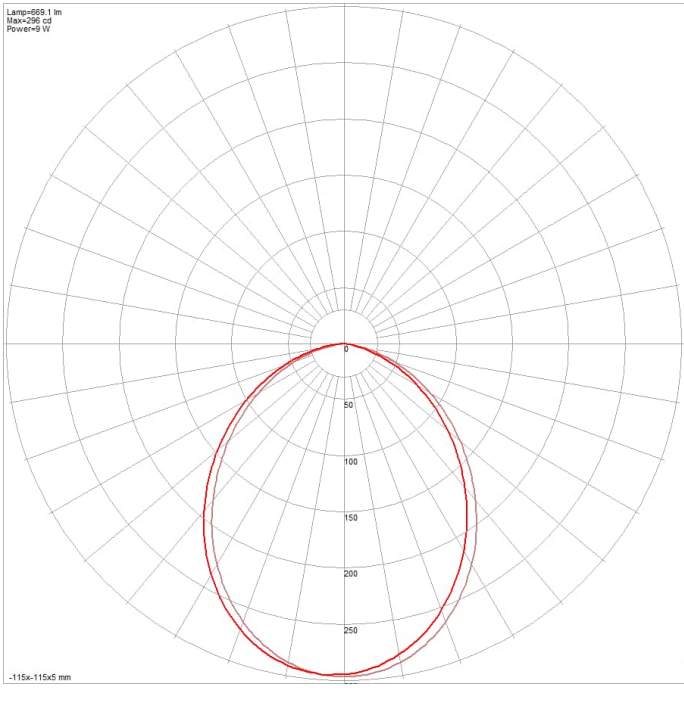
AT9039/WH/DL



AT9039/WH/CW



AT9039/WH/WW



Aluminium Surface Mounted LED Downlights



PRODUCT SPECIFICATIONS

Name: Nella

Material: Aluminium

Colour: Matt Black or Matt White

IP Rating: IP54

Lamp Base: Built in LED

CRI: ≥80

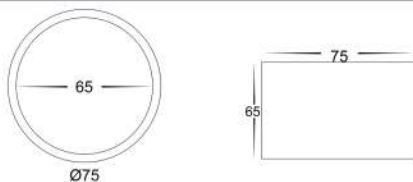
Wiring: Parallel

Dimmable: Yes (Triac)

Warranty: 2 Years Replacement**



DIMENSIONS



OPTIONAL EXTENSIONS

HV5802-BLK-EXT



HV5802-WHT-EXT



COLOUR TEMPERATURE

Tri-Colour By Havit

3000K

4000K

5500K



IP RATING



APPROVALS



Product Ordering

IMAGE	PART NUMBER	COLOUR TEMP	LUMENS	INPUT	BEAM ANGLE	INCLUDED LED
	HV5802T-BLK	3000k 4000k 5500k	560lm 595lm 630lm	240v AC	120°	TRI Colour 7w Built in LED
	HV5802T-WHT	3000k 4000k 5500k	560lm 595lm 630lm			

* Lumen output measured at source

** See Warranty Terms and Conditions for more information

For more information contact Havit Lighting

ADDRESS:
143 Beauchamp Road
Matraville NSW 2036
Australia

Tel: 02 9381 8300
Fax: 02 9666 8881
Email: sales@havit.com.au
web: www.havit.com.au



LED SECURITY LIGHTS

Twin 24W Security Spotlights IP54 with sensor

CONDOR TWIN WITH SENSOR



Features

- High quality die-cast aluminium housing and glass diffuser
- Easy to install with Phillips head screws
- Three selectable colour temperatures
- Up to 30% higher lumen output¹
- Inbuilt relay allows switching and control of other loads
- Highly reliable 240V sensor
- Manual override
- Adjustable sensitivity



Colour temperature

Tri-Colour (3000K, 4000K & 5000K)



IP54 Rating

Improved rating



Quality

Improved design for high reliability



Relay output

230V 300W

Product datasheet

Description

Twin 24W Security Spotlight IP54 with sensor.

Finish



Black (BLK)



White (WH)

Product specification

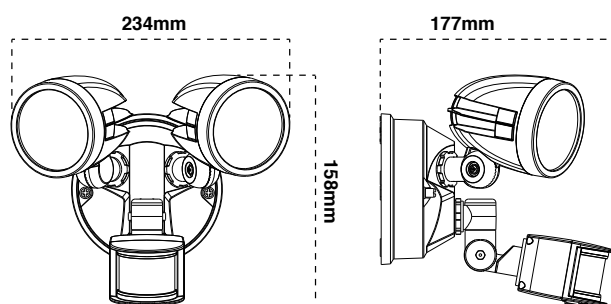
Voltage	230V~ 50Hz
Power consumption	24W
Light colour options	Tri-Colour
Lumen output	2200lm / 2450lm / 2400lm
Colour temperature	3000K / 4000K / 5000K
Colour rendering index	>80
Beam Angle	90°
Dimmable	No
Warranty	3 years
Working temperature	-10°C – 40°C
IP Rating	IP54
Electrical classification	Class I
Sensor specifications	
Relay rating	230V~ 300W
Detection angle	120°
Detection distance	Max 10m (mounted at 2.5m)
Adjustable time	5 sec to 12 min
Lux	10 - 1000 lx

Product range

SKU	Code	Finish
13960	Condor Single	White
13959	Condor Single	Black
13962	Condor Single w/sensor	White
13961	Condor Single w/sensor	Black
13964	Condor Twin	White
13963	Condor Twin	Black
13966	Condor Twin w/sensor	White
13965	Condor Twin w/sensor	Black

Dimensions

Width	Height	Depth
234mm	158mm	177mm



¹ Compared to previous Atom model AT9130.

Aluminium White Up & Down Wall Pillar Lights



PRODUCT SPECIFICATIONS

Name: Tivah

Material: Aluminium

Colour: Poly powder coated white

IP Rating: IP65

Lamp Base: GU10 or MR16

CRI: ≥80

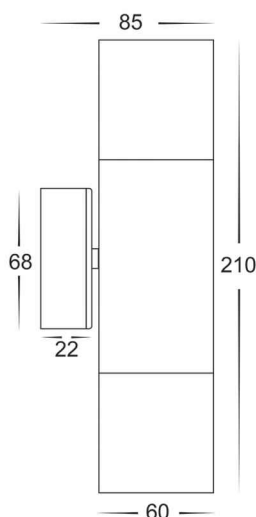
Wiring: Parallel

Dimmable: No

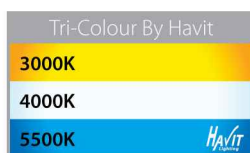
Warranty: 2 Years Replacement**



DIMENSIONS



COLOUR TEMPERATURE



IP RATING



APPROVALS



Product Ordering

IMAGE	PART NUMBER	COLOUR TEMP	LUMENS	INPUT	BEAM ANGLE	INCLUDED LED
	HV1035T	3000K 4000K 5500K	2x 240-560lm 2x 255-595lm 2x 270-630lm	240v	60°	9 in 1 Tri-Colour 2x 3/5/7w GU10 LED
	HV1037GU10T	3000K 4000K 5500K	2x 270lm 2x 285lm 2x 300lm	240v	120°	Tri-Colour 2x 5w GU10 LED
	HV1037MR16T	3000K 4000K 5500K	2x 270lm 2x 285lm 2x 300lm	12v DC	120°	Tri-Colour 2x 5w MR16 LED

12v DC models must be used with suitable 12v DC LED Driver

* Lumen output measured at source

** See Warranty Terms and Conditions for more information

For more information contact Havit Lighting

ADDRESS:
143 Beauchamp Road
Matraville NSW 2036
Australia

Tel: 02 9381 8300
Fax: 02 9666 8881
Email: sales@hav.it.com.au
web: www.havit.com.au

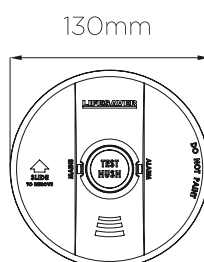


LIFESAVER

6000 SERIES

6800 SMOKE ALARM

Mains Powered 240V AC with 9V DC Battery Backup



Tested & Complies to
Australian Standards
AS3786:2014



Application

The PSA Lifesaver 6800 model is a mains powered, 9V battery backed smoke alarm. The alarm uses photoelectric technology and is designed to be surface mounted on the ceiling or wall. It can be used as a single stand alone unit, or can be interconnected with up to 24 units.

When used with the 6000WB (wireless RF interlink baseplate), the alarm offers wireless interlinking capabilities as well as remote test/hush functionality with 6000THL (wireless smoke alarm controller)

Features

- New advance sensor technology and intelligence to reduce sensitive activations.
- Anti-static sensor to repel dust particles
- Easy installation & maintenance with QUICK SLIDE base.
- Mains powered, surface mount smoke alarm
- 240V AC with 9V battery backup (Duracell supplied)
- Photoelectric sensing technology
- Increased resilience to electrical interferences and dirty power.
- Chamber monitoring feature and first to alarm memory
- Switch-mode power supply uses less power and safer operation.
- Compatible with 5800 series baseplate
- Bug screen over sensor chamber
- Low battery hush feature
- Single button operation
- 5 year warranty
- ActivFire Certified, Approved to AS3786:2014
- SAI Global Certified

6800 SMOKE ALARM

Mains Powered 240V AC with 9V DC Battery Backup



Technical Specifications

Model	6800
Part Number	LIF6800
Sensor Type	Photoelectric Advance Sensor
Supply Voltage	240V AC 50Hz
Power Consumption	10mA max per alarm, 4mA (standby)
Battery Back-up	9V battery (Duracell Alkaline supplied)
Interconnecting	Interconnectable up to 24 units
Alarm Volume	85dBA at 3 metres
Alarm Signal Pattern	ISO8201 (T3 - Repeat 3 long beeps)
Temperature Range	0°C - 40°C
Humidity Range	Up to 93% RH (non-condensing)
Hush Function	Silences alarm for 9 minutes Red LED flashes every 10 seconds Dense smoke will override hush function
Low Battery Hush	Silence low battery beeping for 8 hours
Alarm Duration	Alarm will sound for as long as smoke is detected, then unit will automatically reset when smoke clears.
Alarm Indication	Red LED flashes every second. When interconnected, only the red LED of initiating unit will flash.
Alarm Memory	Red LED flashes 3 times every 40 seconds. Pressing Test button will sound a short beeping sequence.
Chamber Monitoring	3 beeps every 40 seconds. Indicates maintenance is required.
Indicator LEDs	Green LED - Power indicator Red LED - Alarm status indicator, differentiated by frequency of flash.
Wiring Terminal	9V, Active, Switch, Neutral, Loop
Dimensions	130mm (diameter) x 45mm (depth)
Approvals	ActivFire, SAI Global, RCM, AS3786:2014
Warranty	5 years

Item Code

LIF6800	Quantity	Barcode
Single	1	9318475002155
Pack	6	19318475002152
Carton	24	29318475002159
Pallet	648	

Compatibility

6800	240V smoke alarm 9V battery backup (replaceable)
6800RL	240V, 10yr backup battery (non-replaceable)
6000DCW	10yr wireless smoke alarm
6000WB	Wireless RF interlink baseplate
6000THL	Smoke alarm control (wireless) (6800 and 6800RL requires 6000WB)
6000WIRM	Wireless interconnect module

Accessories

LIFHA240	Heat alarm with 9V battery back
LIFCO240	Carbon monoxide alarm
LIF5800ACF	Flush smoke alarm 240V, 10yr backup battery
LIFSAIR	Isolation relay (Gen 2)
LIFSAIRMB	Isolation relay (Gen 2) within mounting block
LIFMB3848	Mounting block
LIFLT711	Smoke alarm tester (aerosol)

Due to continual product development, PSA Products Pty Ltd reserves the right to alter specifications, product details, modify designs and discontinue items without notice or incurring obligation. Whilst every effort is made to ensure that specifications and other information in this document are correct, no warranty is given in respect thereof and the company shall not be liable for any error therein. © 2021 PSA Products Pty Ltd. All Rights Reserved.

PRODUCT DATA AND APPLICATION SHEET

PRODUCT NAME **Classic Series Flush Switches**
(Horizontal/Vertical)



PRODUCT CODE SW1, SW2, SW3, SW4, SW5, SW6
 SW1V, SW2V, SW3V, SW4V, SW5V, SW6V

DESCRIPTION Tesla Classic Switches

BOX QUANTITY 10 **OUTER QUANTITY** 100

FEATURES

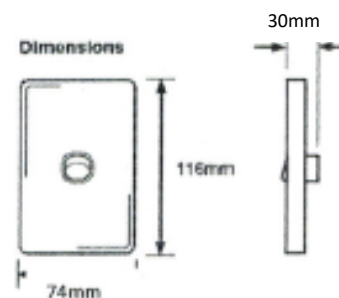
- Available in 1,2,3,4,5 and 6 gang combinations
- Horizontal and vertical mount
- Flush type single pole, single way switches.
- 84mm mounting centers
- Terminals suit 4 x 1.5mm² cable
- No special brackets required for mounting
- Metal cover finishes: MS-Matt Silver, SP-Silver Plastic

WARRANTY

- 5 Years

APPLICATIONS

- This Product is recommended for residential and commercial environments



Specifications
Operational Voltage: 250V a.c. 50Hz
Dimensions: 116 x 74mm
AS/NZS 3133
Approval No SGS/142031-EA
Standard Colours: White



Electrical Components

4-8 Ferndell St SOUTH GRANVILLE NSW 2142

PO Box 3107 WETHERILL PARK NSW 2164

Ph: (02) 9632-5000

Fx: (02) 9632-5011

ABN: 18 165 515 257

Standard Size – Horizontal Mounting				
Product Code	Length	Width	Depth	Mounting Centre's
All Products	74mm	116mm	30mm	84mm apart
SW1	One Gang Flush Type single pole, Single way switches 1SW 16A 250V AC;			
SW2	Two Gang Flush Type single pole, Single way switches 2SW 16A 250V AC;			
SW3	Three Gang Flush Type single pole, Single way switches 3SW 16A 250V AC;			
SW4	Four Gang Flush Type single pole, Single way switches 4SW 16A 250V AC;			
SW5	Five Gang Flush Type single pole, Single way switches 5SW 16A 250V AC;			
SW6	Six Gang Flush Type single pole, Single way switches 6SW 16A 250V AC;			

Standard Size – Vertical Mounting				
Product Code	Length	Width	Depth	Mounting Centre's
All Products	116mm	74mm	30mm	84mm apart
SW1V	One Gang Flush Type single pole, Single way switches 1SW 16A 250V AC;			
SW2V	Two Gang Flush Type single pole, Single way switches 2SW 16A 250V AC;			
SW3V	Three Gang Flush Type single pole, Single way switches 3SW 16A 250V AC;			
SW4V	Four Gang Flush Type single pole, Single way switches 4SW 16A 250V AC;			
SW5V	Five Gang Flush Type single pole, Single way switches 5SW 16A 250V AC;			
SW6V	Six Gang Flush Type single pole, Single way switches 6SW 16A 250V AC;			

PRODUCT DATA AND APPLICATION SHEET

PRODUCT NAME **Classic Double Power Point (White/Black)
(Horizontal/Vertical)**

PRODUCT CODE GPO2, GPO2X, GPO2V, WGPO2D, GPO2XV, GPO2/15
GPO2/BLK, GPO2/BLK, WGPO2D/BLK

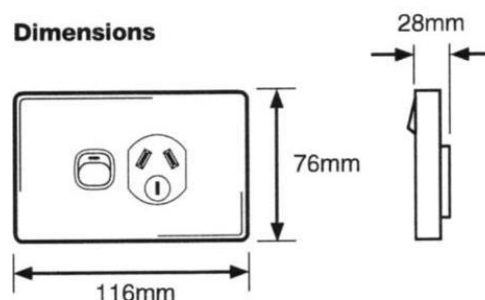
DESCRIPTION Tesla Classic Double GPO range in White or Black

BOX QUANTITY 10 **OUTER QUANTITY** 100

FEATURES

- Available in single and twin variants
- Extra switch variants
- Double pole variants
- Horizontal mount
- 84mm mounting centers
- Terminals suit 4 x 2.5mm² cable
- No special brackets required for mounting
- Metal cover finishes: MS – Matt Silver, SP – Silver Plastic, MG – Gold

Dimensions



Specifications

Operational Voltage: 250V a.c. 50Hz
Dimensions: 116mm x 76mm
AS/NZS 3112:2004 + A1
Approval No: SGS/142030-EA

APPLICATIONS

- This product is recommended for residential and commercial environments

Standard Size Classic Double Power Point – Horizontal Mounting				
Product Code	Length	Width	Depth	Mounting Centres
All Products	116mm	76mm	28mm	84mm
GPO2	Twin Switch Socket Outlet, 250V/10A			
GPO2V	Vertical Twin Switched Socket Outlet, 250V/10A			
GPO2X	Twin Switched Socket Outlet, 250V/10A, With removable extra Switch			
WGPO2D	Twin Switched Socket Outlet, 250V/10A, Double Pole			
GPO2XV	Vertical Twin Switched Socket Outlet, 250V/10A, With removable extra Switch			
GPO2/15	Twin Switched Socket Outlet, 250V/15A			
GPO2/BLK	Twin Switch Socket Outlet, 250V/10A - BLACK			
GPO2X/BLK	Twin Switched Socket Outlet, 250V/10A, With removable extra Switch - BLACK			

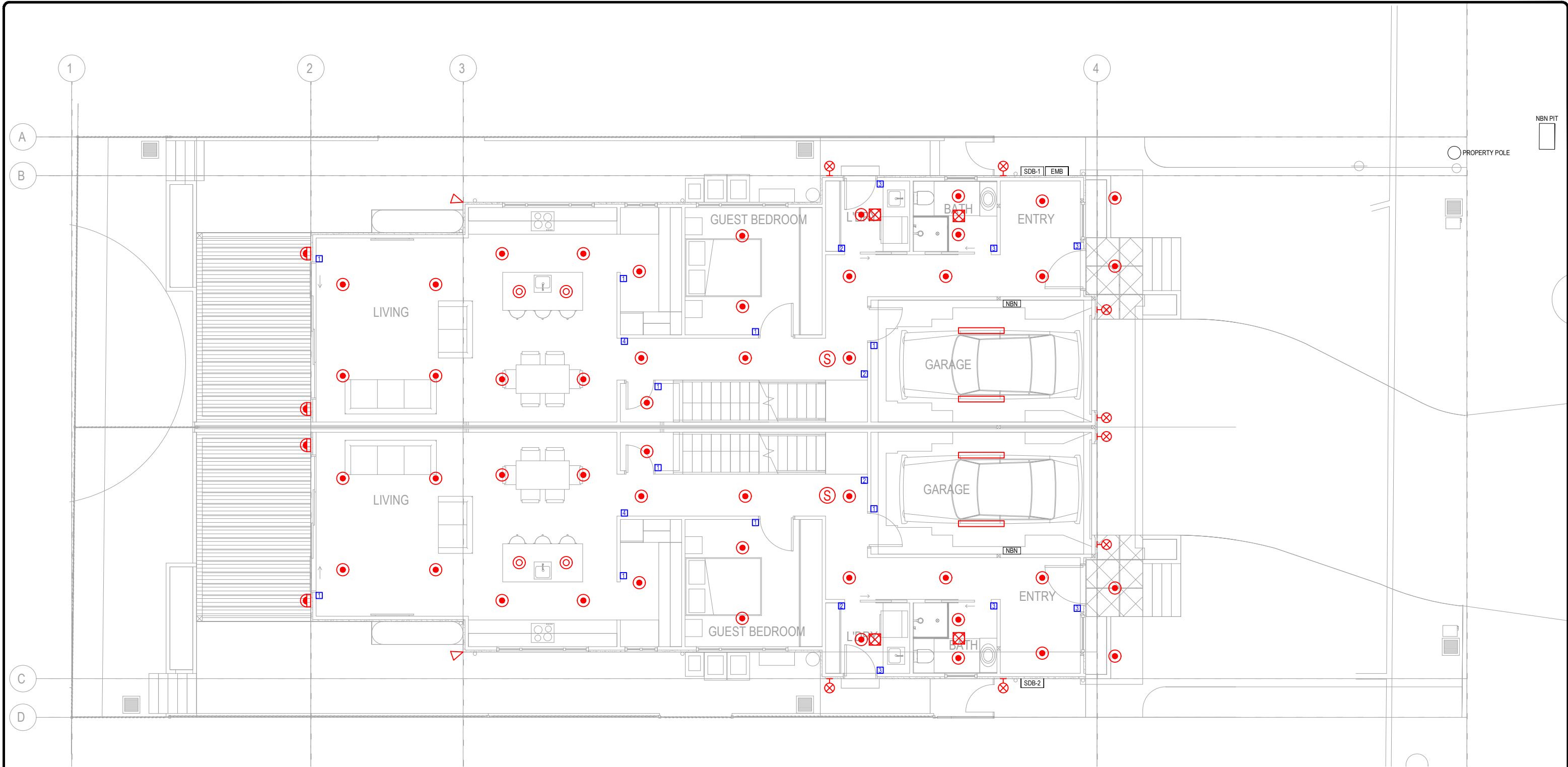
5: AS-BUILT DRAWINGS

Specialist Services Australia Pty Ltd | ABN 89 135 692 170 | ACN 135 692 170
Telephone: 1300 322 000 | Email: admin@specialistsvs.com.au

NSW Office
6 Ferris Street, North Parramatta NSW 2151
License: 220319C / Refrigerant License: AU37048

VIC Office
3/88 Wirraway Drive, Port Melbourne VIC 3207
License: REC 26786

QLD Office
15 Christine Avenue, Miami QLD 4220
License: 82540



LEGEND OF SYMBOLS

- RECESSED DOWNLIGHT
- SURFACE MOUNT CAN LIGHT
- BUNKER LIGHT - EXTERNAL
- PENDANT LIGHT
- UPDOWN LIGHT - EXTERNAL
- SURFACE MOUNT LED BATTEN

FLOODLIGHT - EXTERNALEXHAUST FANCEILING FANSMOKE DETECTORLIGHT SWITCH
= NO. OF GANGS

0	AS BUILT	09.09.25
ISSUE	AMENDMENT	DATE

specialist
services

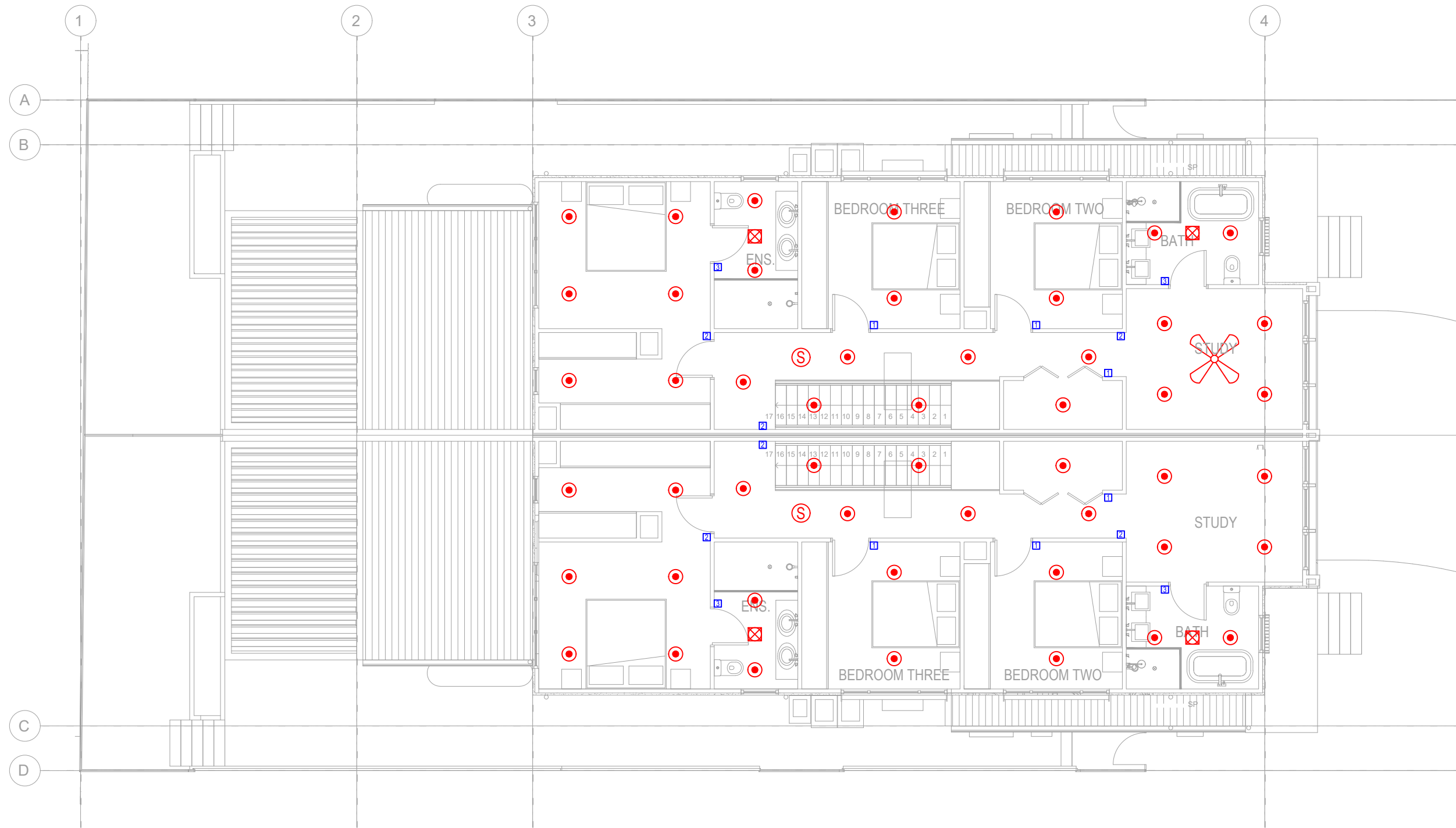
6 FERRIS STREET
NORTH PARRAMATTA NSW 2151
T: 1300 322 000
E: admin@specialistsvs.com.au

© THIS DRAWING IS COPYRIGHT AND MAY NOT BE USED WITHOUT WRITTEN CONSENT.
DIMENSIONS IN MILLIMETRES. CONFIRM ALL DIMENSIONS ON SITE.

PROJECT:
PROPOSED DUAL OCCUPANCY
74 STEPHEN ST, BLACKTOWN, NSW 2148

TITLE:
GROUND FLOOR PLAN
LIGHTING LAYOUT

DRAWN:	
CHECKED:	
DATE:	
JOB NO.:	1:100 @A3
DWG NO.:	E-1001
	0



LEGEND OF SYMBOLS

- | | | | |
|--|--------------------------|--|----------------------------------|
| | RECESSED DOWNLIGHT | | FLOODLIGHT - EXTERNAL |
| | SURFACE MOUNT CAN LIGHT | | EXHAUST FAN |
| | BUNKER LIGHT - EXTERNAL | | CEILING FAN |
| | PENDANT LIGHT | | SMOKE DETECTOR |
| | UPDOWN LIGHT - EXTERNAL | | LIGHT SWITCH
= NO. OF GANGS |
| | SURFACE MOUNT LED BATTEN | | |

0	AS BUILT	09.09.25
ISSUE	AMENDMENT	DATE

**specialist
services**

6 FERRIS STREET
NORTH PARRAMATTA NSW 2151
T: 1300 322 000
E: admin@specialistsvs.com.au

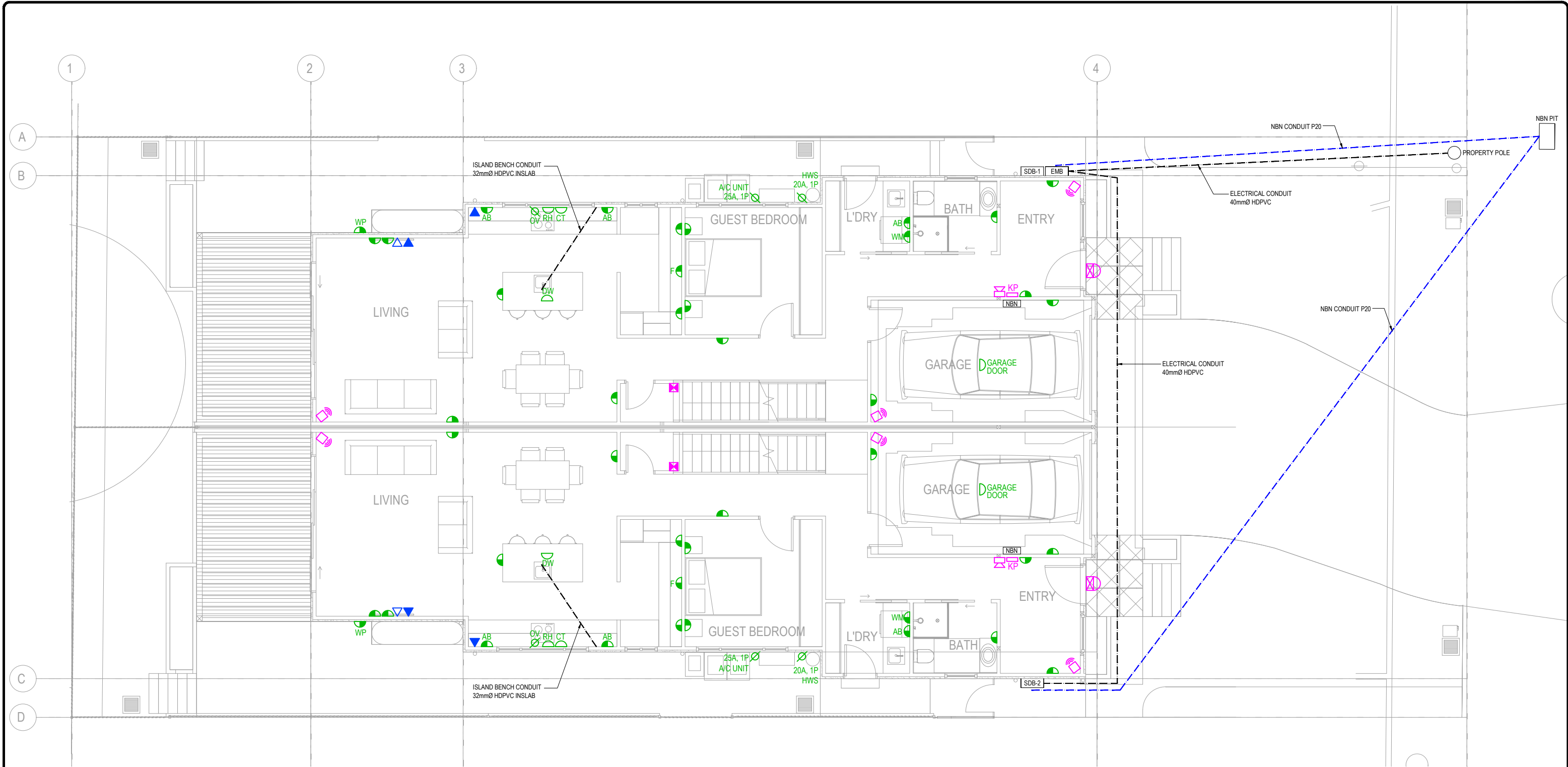
© THIS DRAWING IS COPYRIGHT AND MAY NOT BE USED WITHOUT WRITTEN CONSENT.
DIMENSIONS IN MILLIMETRES. CONFIRM ALL DIMENSIONS ON SITE.

PROJECT:
PROPOSED DUAL OCCUPANCY
74 STEPHEN ST, BLACKTOWN, NSW 2148

TITLE:
FIRST FLOOR PLAN
LIGHTING LAYOUT

DRAWN:
CHECKED:
DATE:

JOB NO.:	1:100 @A3
DWG NO.:	E-1002
	0



LEGEND OF SYMBOLS

- SINGLE GPO
WP = WEATHERPROOF
- DOUBLE GPO
WP = WEATHERPROOF
- PERMANENT CONNECTION - 1 PHASE
- DATA OUTLET
- TV / FOXTEL OUTLET
- STROBE LIGHT
- SIREN SCREAMER
- SECURITY KEYPAD
- SECURITY PIR SENSOR
- ALARM BOX

0	AS BUILT	09.09.25
ISSUE	AMENDMENT	DATE

specialist
services

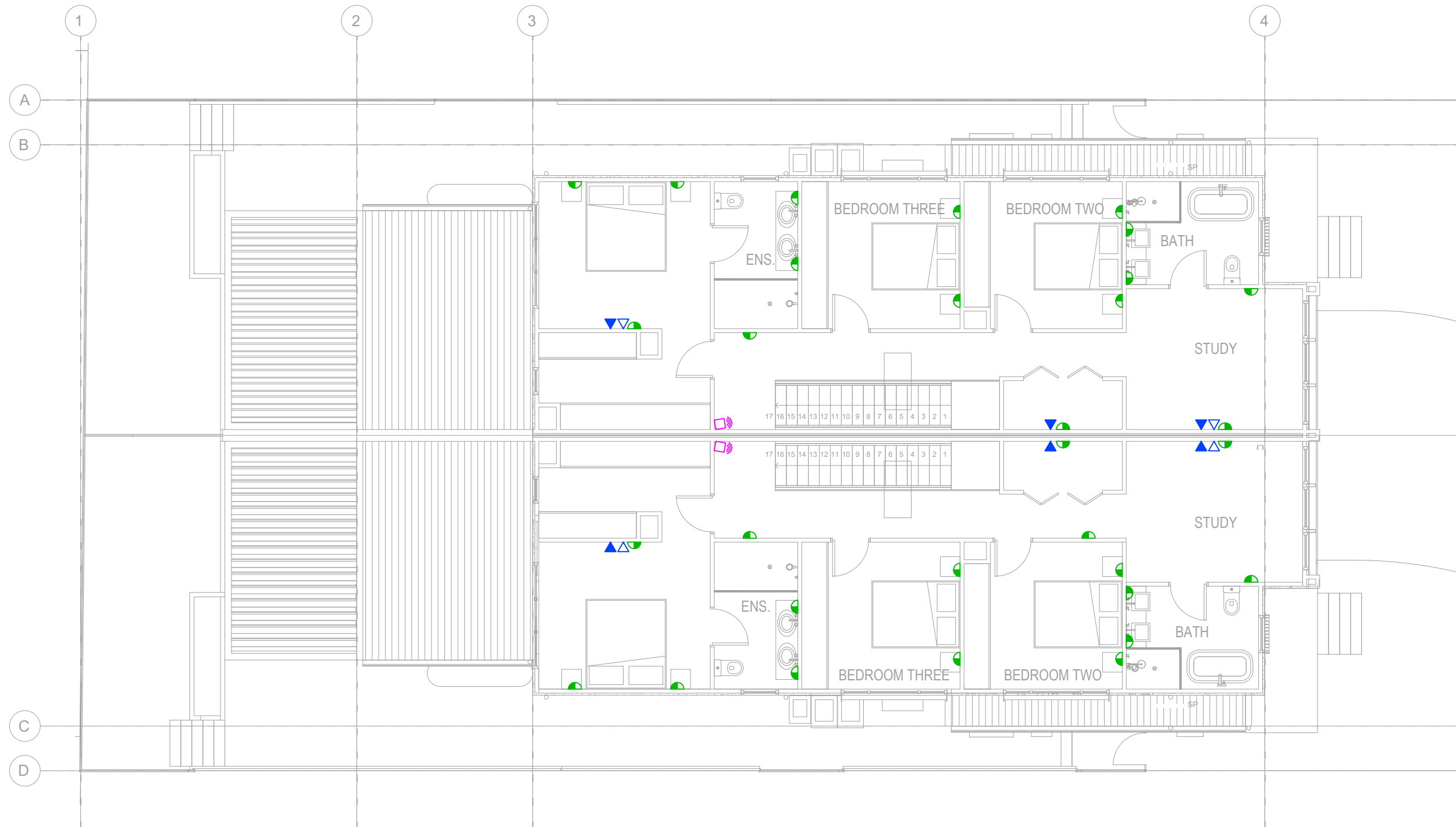
6 FERRIS STREET
NORTH PARRAMATTA NSW 2151
T: 1300 322 000
E: admin@specialistsvs.com.au

© THIS DRAWING IS COPYRIGHT AND MAY NOT BE USED WITHOUT WRITTEN CONSENT.
DIMENSIONS IN MILLIMETRES. CONFIRM ALL DIMENSIONS ON SITE.

PROJECT:
PROPOSED DUAL OCCUPANCY
74 STEPHEN ST, BLACKTOWN, NSW 2148

TITLE:
GROUND FLOOR PLAN
POWER, DATA & SECURITY LAYOUT

DRAWN:	
CHECKED:	
DATE:	
JOB NO.:	1:100 @A3
DWG NO.:	E-2001
	0



LEGEND OF SYMBOLS

- | | | | |
|--|--------------------------------|--|---------------------|
| | SINGLE GPO | | STROBE LIGHT |
| | DOUBLE GPO | | SIREN SCREAMER |
| | WP = WEATHERPROOF | | SECURITY KEYPAD |
| | PERMANENT CONNECTION - 1 PHASE | | SECURITY PIR SENSOR |
| | DATA OUTLET | | ALARM BOX |
| | TV / FOXTEL OUTLET | | |

0	AS BUILT	09.09.25
ISSUE	AMENDMENT	DATE

**specialist
services**

6 FERRIS STREET
NORTH PARRAMATTA NSW 2151
T: 1300 322 000
E: admin@specialistsvs.com.au

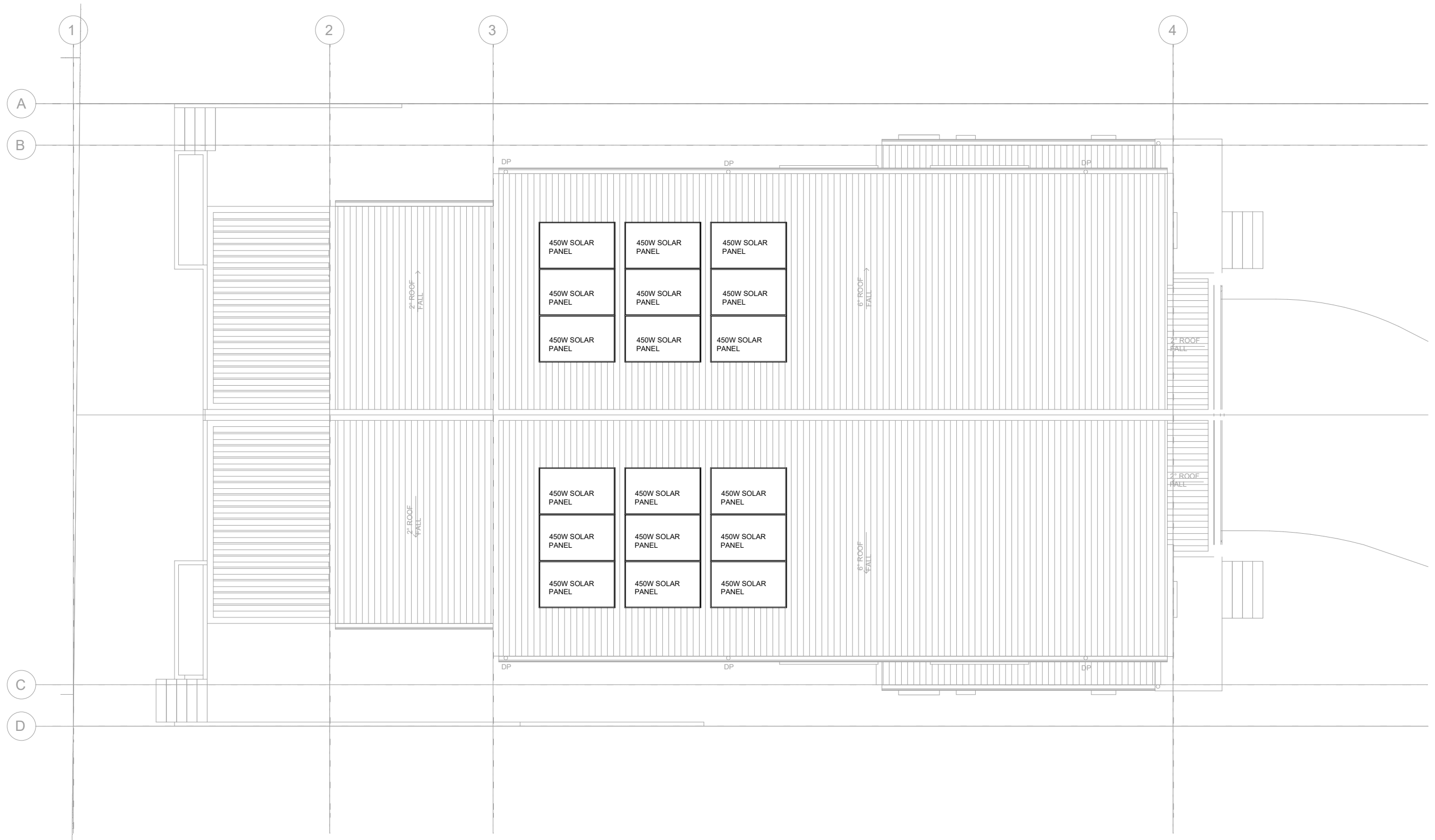
© THIS DRAWING IS COPYRIGHT AND MAY NOT BE USED WITHOUT WRITTEN CONSENT.
DIMENSIONS IN MILLIMETRES. CONFIRM ALL DIMENSIONS ON SITE.

PROJECT:
PROPOSED DUAL OCCUPANCY
74 STEPHEN ST, BLACKTOWN, NSW 2148

TITLE:
FIRST FLOOR PLAN
POWER, DATA & SECURITY LAYOUT

DRAWN:
CHECKED:
DATE:

JOB NO.:	1:100 @A3
DWG NO.:	E-2002
	0



0	AS BUILT	09.09.25
ISSUE	AMENDMENT	DATE

specialist
services

6 FERRIS STREET
NORTH PARRAMATTA NSW 2151
T: 1300 322 000
E: admin@specialistsvs.com.au

© THIS DRAWING IS COPYRIGHT AND MAY NOT BE USED WITHOUT WRITTEN CONSENT.
DIMENSIONS IN MILLIMETRES. CONFIRM ALL DIMENSIONS ON SITE.

PROJECT:
PROPOSED DUAL OCCUPANCY
74 STEPHEN ST, BLACKTOWN, NSW 2148

TITLE:
ROOF PLAN
SOLAR PANEL LAYOUT

DRAWN:
CHECKED:
DATE:

JOB NO.:

DWG NO.: **E-3001**

1:100 @A3

0